

# VC COLLET CHUCKS



VC COLLET CHUCKS



## VC COLLET CHUCK FEATURES

### ULTRA PERFORMANCE

**Extremely Precise:** 0.00012" or less concentricity guarantee with any collet

**Extremely Efficient:** Ideal for high-speed machining, thread milling, ultra precision reaming

**Flexible:** Covers sizes from 0.079" to 0.5"

**Extremely Accurate:** Double the accuracy over ER Collet Chucks, with ten times better repeatability

**8° Versus 16° Collet Taper:** Double the gripping power of ER Collet Chucks



### Coolant-Thru Disc

A perfect seal is formed between the nut and the coolant-thru disk. Ideal for coolant-thru tools.



### Coolant-Thru Capabilities

Jet Coolant Splash with J-Type Nut



### Slotted Disc

The jet coolant pressure creates a tornado effect, ensuring efficient swarf disposal.



# VC COLLET CHUCKS

## VC COLLET CHUCK FEATURES

The thick wall design of the VC holder body improves cutting rigidity

8° internal taper collet for greater accuracy and clamping capability

The ground ion nitrided thread of collet chuck highly improves the torque and accuracy

### TiN Bearing Nut

(Hardness: HV2,200)  
US Patent 6923451  
Reduces friction to minimize runout caused by collet twisting

Collet compression force is perpendicular to the centerline of collet bore maximizing runout accuracy and gripping strength

Ground pilot helps centralize the collet while giving additional length support on the cutting tool

Symmetrical and simple external nut design without notches for ultra high speed rotation

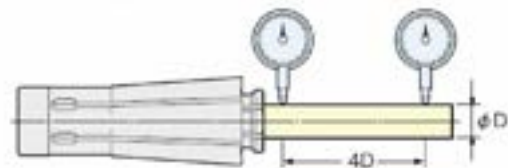
Extended Collet to minimize runout and to increase surface area contact of tooling

Easy, safe and reliable handling with GH wrench (see page 88)



### High Runout Accuracy:

**Within 0.00012" at 4 times the diameter of the cutting tool!**  
This produces better stability and improves surface finish and cutting tool life.



### VC Collet Range:



VCK6: 2-6mm (1/8"-1/4")  
VCK13: 3-12mm (1/8"-1/2")

### VC Collet vs. Others:



#### VCK Collet

- Runout: 0.0001"
- 170N.m gripping power



#### ER Collet

- Runout: 0.0004"
- 80N.m gripping power



#### TG Collet

- Runout: 0.0003"
- 100N.m gripping power

## CAT VC COLLET CHUCKS

### FEATURES

- TiN Bearing Nut which considerably improves cutting rigidity and finish
- Extra thick body for aggressive milling
- High concentricity and repeatability
- Ideal for high-speed applications



**T.I.R.**  
<0.00012" at 4xD



**Speed**  
Up to 30,000 rpm



**Coolant-Thru**  
Thru-tool coolant



Please note that the maximum RPM listed in our catalog may vary depending on the toolholder shank, weight, balanceability and the G rating.

### CAT40

Part Number	Collet Size	Wrench	L (mm)	L	L1	L2	D	D1	Back-up Screw	Max. RPM	Fig.
CAT40-VC6-60U-IDU	VCK6	GH10	60	2.36"	0.99"	-	1.08"	1.75"	VCG6-8A	30K	2
CAT40-VC6-90U-IDU	VCK6	GH10	90	3.54"	0.87"	2.17"	1.08"	1.75"	VCG6-8A	30K	1
CAT40-VC6-120U-IDU	VCK6	GH10	120	4.72"	0.87"	3.35"	1.08"	1.75"	VCG6-8A	30K	1
CAT40-VC13-60U-IDU	VCK13	GH16	60	2.36"	1.14"	-	1.59"	1.75"	VCG13-15A	30K	2
CAT40-VC13-90U-IDU	VCK13	GH16	90	3.54"	1.10"	2.39"	1.59"	1.75"	VCG13-15A	30K	1
CAT40-VC13-120U-IDU	VCK13	GH16	120	4.72"	1.10"	3.65"	1.59"	1.75"	VCG13-15A	30K	1

Note: Wrenches are sold separately

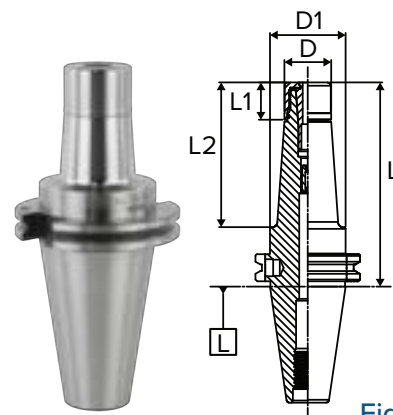


Fig. 1

### CAT50

Part Number	Collet Size	Wrench	L (mm)	L	L1	L2	D	D1	Back-up Screw	Max. RPM	Fig.
CAT50-VC6-105U-IDU	VCK6	GH10	105	4.13"	0.87"	2.76"	1.08"	2.75"	VCG6-8A	20K	1
CAT50-VC13-105U-IDU	VCK13	GH16	105	4.13"	1.10"	2.76"	1.59"	2.75"	VCG13-15A	20K	1
CAT50-VC13-135U-IDU	VCK13	GH16	135	5.31"	1.10"	3.94"	1.59"	2.75"	VCG13-15A	20K	1
CAT50-VC13-165U-IDU	VCK13	GH16	165	6.50"	1.10"	5.12"	1.59"	2.75"	VCG13-15A	20K	1

Notes: Wrenches are sold separately.

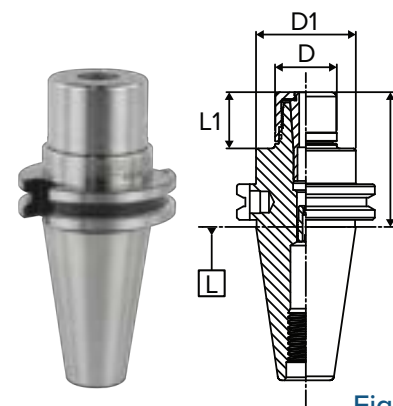


Fig. 2



Available in  
**TAPER PLUS**  
Dual-taper and flange contact

See Pages 84-85



### TAPER PLUS COMBINING TAPER ACCURACY WITH FLANGE RIGIDITY!

- Outstanding Runout Accuracy for longer tool life
- Vibration Dampening for increased productivity
- High Rigidity for smooth and stable cutting



VCK Collets  
Page 86



Nut Wrench  
Page 88



Back-up Screw  
Page 88



Coolant-thru Nut  
Page 87

# VC COLLET CHUCKS

## BT VC COLLET CHUCKS

### FEATURES

- TiN Bearing Nut which considerably improves cutting rigidity and finish
- Extra thick body for aggressive milling
- High concentricity and repeatability
- Ideal for high-speed applications



**T.I.R.**  
<0.00012" at 4xD



**Speed**  
Up to 40,000 rpm



**Coolant-Thru**  
Thru-tool coolant



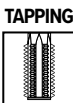
**MILLING**



**REAMING**



**DRILLING**



**TAPPING**

Please note that the maximum RPM listed in our catalog may vary depending on the toolholder shank, weight, balanceability and the G rating.

### BT30

Part Number	Collet Size	Wrench	L (mm)	L	L1	D	D1	Back-up Screw	Max. RPM	Fig.
BT30-VC6-45	VCK6	GH10	45	1.77"	0.91"	1.08"	1.08"	VCG6-8A	40K	1
BT30-VC6-60	VCK6	GH10	60	2.36"	0.87"	1.08"	1.25"	VCG6-8A	40K	2
BT30-VC6-90	VCK6	GH10	90	3.54"	0.87"	1.08"	1.31"	VCG6-8A	40K	2
BT30-VC13-60	VCK13	GH16	60	2.36"	1.10"	1.59"	1.62"	VCG13-15A	40K	2
BT30-VC13-90	VCK13	GH16	90	3.54"	1.10"	1.59"	1.63"	VCG13-15A	40K	2
BT30-VC13-120	VCK13	GH16	120	4.72"	1.10"	1.59"	1.67"	VCG13-15A	40K	2

Note: Wrenches are sold separately



Available in **TAPER PLUS+**  
Dual-taper and flange contact

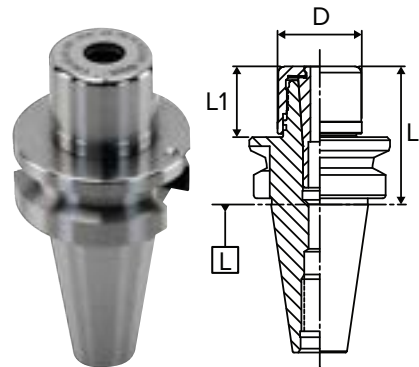


Fig. 3

### BT40

Part Number	Collet Size	Wrench	L (mm)	L	L1	D	D1	Back-up Screw	Max. RPM	Fig.
BT40-VC6-60	VCK6	GH10	60	2.36"	0.87"	1.08"	1.18"	VCG6-8A	30K	2
BT40-VC6-90	VCK6	GH10	90	3.54"	0.87"	1.08"	1.29"	VCG6-8A	30K	2
BT40-VC6-120	VCK6	GH10	120	4.72"	0.87"	1.08"	1.45"	VCG6-8A	30K	2
BT40-VC13-60	VCK13	GH16	60	2.36"	1.30"	1.59"	1.59"	VCG13-15A	30K	1
BT40-VC13-90	VCK13	GH16	90	3.54"	1.10"	1.59"	1.75"	VCG13-15A	30K	2
BT40-VC13-120	VCK13	GH16	120	4.72"	1.10"	1.59"	1.91"	VCG13-15A	30K	2

Note: Wrenches are sold separately



Available in **TAPER PLUS+**  
Dual-taper and flange contact

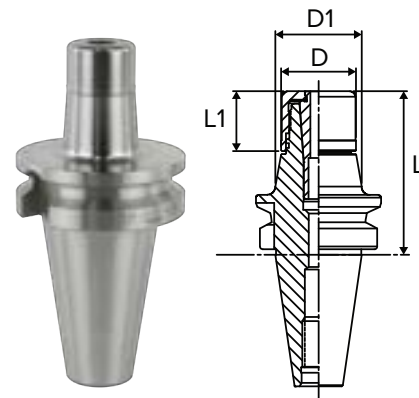


Fig. 4

### BT50

Part Number	Collet Size	Wrench	L (mm)	L	L1	D	D1	Back-up Screw	Max. RPM	Fig.
BT50-VC6-105	VCK6	GH10	105	4.13"	0.87"	1.08"	1.30"	VCG6-8A	20K	2
BT50-VC6-135	VCK6	GH10	135	5.31"	0.87"	1.08"	1.46"	VCG6-8A	20K	2
BT50-VC6-165	VCK6	GH10	165	6.50"	0.87"	1.08"	1.63"	VCG6-8A	20K	2
BT50-VC13-105	VCK13	GH16	105	4.13"	1.10"	1.59"	1.76"	VCG13-15A	20K	2
BT50-VC13-135	VCK13	GH16	135	5.31"	1.10"	1.59"	1.92"	VCG13-15A	20K	2
BT50-VC13-165	VCK13	GH16	165	6.50"	1.10"	1.59"	2.09"	VCG13-15A	20K	2

Note: Wrenches are sold separately



VCK Collets  
Page 86



Nut Wrench  
Page 88



Back-up Screw  
Page 88



Coolant-thru Nut  
Page 87



## HSK VC COLLET CHUCKS

### FEATURES

- TiN Bearing Nut which considerably improves cutting rigidity and finish
- Extra thick body for aggressive milling
- High concentricity and repeatability
- Ideal for high-speed applications



**T.I.R.**  
<0.00012" at 4xD



**Speed**  
Up to 40,000 rpm



**Coolant-Thru**  
Thru-tool coolant



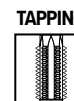
**MILLING**



**REAMING**



**DRILLING**



**TAPPING**

Please note that the maximum RPM listed in our catalog may vary depending on the toolholder shank, weight, balanceability and the G rating.

### HSK40A

Part Number	Collet Size	Wrench	L (mm)	L	L1	D	D1	Back-up Screw	Max. RPM	Fig.
<b>HSK40A-VC6-65</b>	VCK6	GH10	65	2.56"	0.87"	1.08"	1.32"	VCG6-8A	40K	1
<b>HSK40A-VC6-90</b>	VCK6	GH10	90	3.54"	0.87"	1.08"	1.32"	VCG6-8A	40K	1
<b>HSK40A-VC13-90</b>	VCK13	GH16	90	3.54"	2.76"	1.59"	1.59"	VCG13-15A	40K	2
<b>HSK40A-VC13-120</b>	VCK13	GH16	120	4.72"	3.94"	1.59"	1.59"	VCG13-15A	40K	2

Note: Wrench, Coolant Tubes and Coolant Tube Wrenches are sold separately.  
See page 88 for more details.

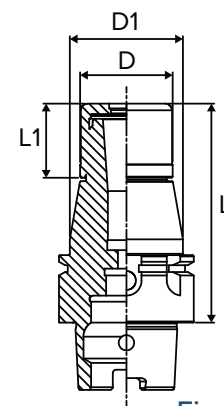


Fig. 5

### HSK40E

Part Number	Collet Size	Wrench	L (mm)	L	L1	D	D1	Back-up Screw	Max. RPM	Fig.
<b>HSK40E-VC6-65</b>	VCK6	GH10	65	2.56"	0.87"	1.08"	1.34"	VCG6-8A	40K	1
<b>HSK40E-VC6-90</b>	VCK6	GH10	90	3.54"	0.87"	1.08"	1.34"	VCG6-8A	40K	1
<b>HSK40E-VC13-90</b>	VCK13	GH16	90	3.54"	2.76"	1.59"	1.59"	VCG13-15A	40K	2
<b>HSK40E-VC13-120</b>	VCK13	GH16	120	4.72"	3.94"	1.59"	1.59"	VCG13-15A	40K	2

Note: Wrench, Coolant Tubes and Coolant Tube Wrenches are sold separately.  
See page 88 for more details.

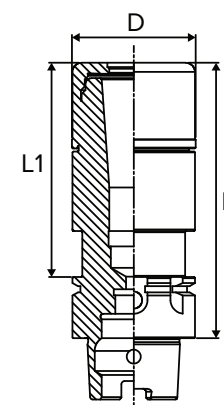


Fig. 6



VCK  
Collets  
Page 86



Nut  
Wrench  
Page 88



Back-up  
Screw  
Page 88



Coolant-  
thru Nut  
Page 87



Coolant  
Tube  
Page 88

# VC COLLET CHUCKS

## HSK VC COLLET CHUCKS

### FEATURES

- TiN Bearing Nut which considerably improves cutting rigidity and finish
- Extra thick body for aggressive milling
- High concentricity and repeatability
- Ideal for high-speed applications



**T.I.R.**  
<0.00012" at 4xD



**Speed**  
Up to 30,000 rpm



**Coolant-Thru**  
Thru-tool coolant



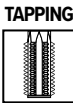
**MILLING**



**REAMING**



**DRILLING**



**TAPPING**

Please note that the maximum RPM listed in our catalog may vary depending on the toolholder shank, weight, balanceability and the G rating.

### HSK63A

Part Number	Collet Size	Wrench	L (mm)	L	L1	D	D1	Back-up Screw	Max. RPM	Fig.
HSK63A-VC13-90-IDU	VCK13	GH16	90	3.54"	1.10"	1.59"	1.75"	VCG13-15A	30K	1

Note: Wrench, Coolant Tubes and Coolant Tube Wrenches are sold separately.  
See page 88 for more details.

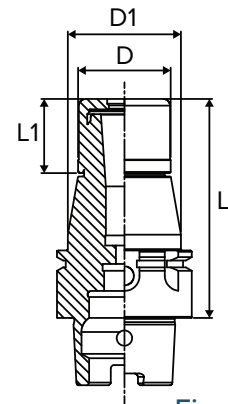


Fig. 5

### HSK63F

Part Number	Collet Size	Wrench	L (mm)	L	L1	D	D1	Back-up Screw	Max. RPM	Fig.
HSK63F-VC6-65	VCK6	GH10	65	2.56"	1.54"	1.08"	1.08"	VCG6-8A	30K	2
HSK63F-VC6-90	VCK6	GH10	90	3.54"	0.87"	1.08"	1.29"	VCG6-8A	30K	1
HSK63F-VC6-120	VCK6	GH10	120	4.72"	0.87"	1.08"	1.46"	VCG6-8A	30K	1
HSK63F-VC13-90	VCK13	GH16	90	3.54"	1.10"	1.59"	1.75"	VCG13-15A	30K	1
HSK63F-VC13-120	VCK13	GH16	120	4.72"	1.10"	1.59"	1.92"	VCG13-15A	30K	1

Note: Wrench, Coolant Tubes and Coolant Tube Wrenches are sold separately.  
See page 88 for more details.

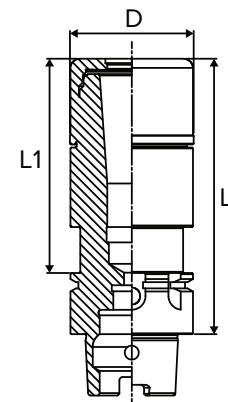


Fig. 6

### HSK100A

Part Number	Collet Size	Wrench	L (mm)	L	L1	D	D1	Back-up Screw	Max. RPM	Fig.
HSK100A-VC13-105	VCK13	GH16	105	4.13"	1.10"	1.59"	1.81"	VCG6-8A	20K	1

Note: Wrench, Coolant Tubes and Coolant Tube Wrenches are sold separately.  
See page 88 for more details.



VCK  
Collets  
Page 86



Nut  
Wrench  
Page 88



Back-up  
Screw  
Page 88

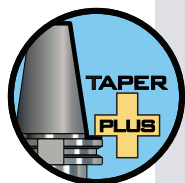


Coolant-  
thru Nut  
Page 87



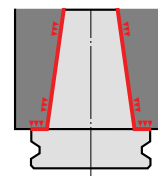
Coolant  
Tube  
Page 88

## TAPER PLUS CAT VC COLLET CHUCKS



### Taper Plus (Dual Contact) Advantages

- Outstanding runout accuracy for longer tool life
- Vibration dampening for increased productivity
- High rigidity for smooth and stable cutting
- Interchangeable between standard and dual face contact spindles
- 53% more surface area contact than just the taper alone



### TAPER PLUS - CAT40

Part Number	Collet Size	Wrench	L (mm)	L	L1	L2	D	D1	Back-up Screw	Max. RPM	Fig.
NCAT40-VC6-60U-IDU	VC6	GH10	60	2.36"	0.98"	-	1.08"	1.75"	VCG6-8A	30K	2
NCAT40-VC6-90U-IDU	VC6	GH10	90	3.54"	0.87"	2.17"	1.08"	1.75"	VCG6-8A	30K	1
NCAT40-VC13-60U-IDU	VC13	GH16	60	2.36"	1.14"	-	1.59"	1.75"	VCG13-15A	30K	2
NCAT40-VC13-90U-IDU	VC13	GH16	90	3.54"	1.10"	2.39"	1.59"	1.75"	VCG13-15A	30K	1
NCAT40-VC13-120U-IDU	VC13	GH16	120	4.72"	1.10"	3.65"	1.59"	1.75"	VCG13-15A	30K	1

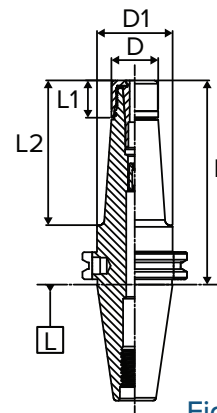


Fig. 1

### TAPER PLUS - CAT50

Part Number	Collet Size	Wrench	L (mm)	L	L1	L2	D	D1	Back-up Screw	Max. RPM	Fig.
NCAT50-VC6-135U-IDU	VC6	GH10	135	5.31"	0.87"	3.94"	1.08"	2.75"	VCG6-8A	20K	1
NCAT50-VC6-165U-IDU	VC6	GH10	165	6.50"	0.87"	5.12"	1.08"	2.75"	VCG6-8A	20K	1
NCAT50-VC13-105U-IDU	VC13	GH16	105	4.13"	1.10"	2.76"	1.59"	2.75"	VCG13-15A	20K	1
NCAT50-VC13-135U-IDU	VC13	GH16	135	5.31"	1.10"	3.94"	1.59"	2.75"	VCG13-15A	20K	1
NCAT50-VC13-165U-IDU	VC13	GH16	165	6.50"	1.10"	5.12"	1.59"	2.75"	VCG13-15A	20K	1

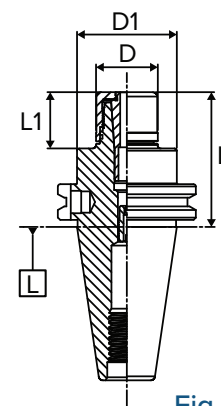


Fig. 2

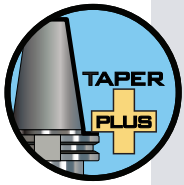
**Taper Plus Toolholders are interchangeable between Standard and Dual Face Contact spindles for greater flexibility!**





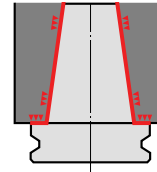
# VC COLLET CHUCKS

## TAPER PLUS BT VC COLLET CHUCKS



### Taper Plus (Dual Contact) Advantages

- Outstanding runout accuracy for longer tool life
- Vibration dampening for increased productivity
- High rigidity for smooth and stable cutting
- Interchangeable between standard and dual face contact spindles
- 53% more surface area contact than just the taper alone



### TAPER PLUS - BT30

Part Number	Collet Size	Wrench	L (mm)	L	L1	D	D1	Back-up Screw	Max. RPM	Fig.
NBT30-VC6-45	VC6	GH10	45	1.77"	0.91"	1.08"	1.08"	VCG6-8A	40K	1
NBT30-VC6-60	VC6	GH10	60	2.36"	0.87"	1.08"	1.25"	VCG6-8A	40K	2
NBT30-VC6-90	VC6	GH10	90	3.54"	0.87"	1.08"	1.31"	VCG6-8A	40K	2
NBT30-VC13-60	VC13	GH16	60	2.36"	1.10"	1.59"	1.62"	VCG13-15A	40K	2
NBT30-VC13-90	VC13	GH16	90	3.54"	1.10"	1.59"	1.63"	VCG13-15A	40K	2
NBT30-VC13-120	VC13	GH16	120	4.72"	1.10"	1.59"	1.67"	VCG13-15A	40K	2

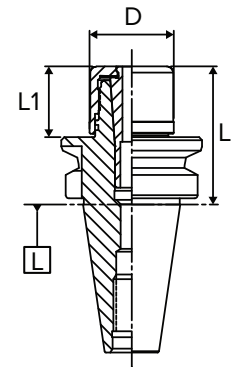


Fig. 3

### TAPER PLUS - BT40

Part Number	Collet Size	Wrench	L (mm)	L	L1	D	D1	Back-up Screw	Max. RPM	Fig.
NBT40-VC6-60	VC6	GH10	60	2.36"	0.87"	1.08"	1.18"	VCG6-8A	30K	2
NBT40-VC6-90	VC6	GH10	90	3.54"	0.87"	1.08"	1.29"	VCG6-8A	30K	2
NBT40-VC6-120	VC6	GH10	120	4.72"	0.87"	1.08"	1.45"	VCG6-8A	30K	2
NBT40-VC6-150	VC6	GH10	150	5.91"	0.87"	1.08"	1.62"	VCG6-8A	30K	2
NBT40-VC13-60	VC13	GH16	60	2.36"	1.30"	1.59"	1.59"	VCG13-15A	30K	1
NBT40-VC13-90	VC13	GH16	90	3.54"	1.10"	1.59"	1.75"	VCG13-15A	30K	2
NBT40-VC13-120	VC13	GH16	120	4.72"	1.10"	1.59"	1.91"	VCG13-15A	30K	2
NBT40-VC13-150	VC13	GH16	150	5.91"	1.10"	1.59"	2.08"	VCG13-15A	30K	2

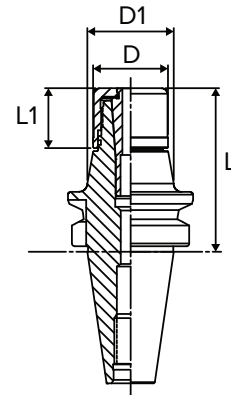


Fig. 4

**Taper Plus Toolholders are interchangeable between Standard and Dual Face Contact spindles for greater flexibility!**



VCK Collets  
Page 86



Nut Wrench  
Page 88



Back-up Screw  
Page 88

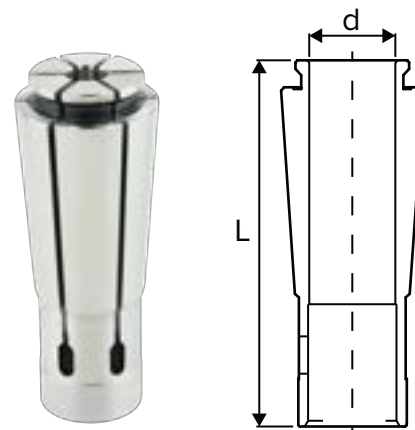


Coolant-thru Nut  
Page 87

## VCK COLLETS

### DIMENSIONAL DATA

Collet Series	L	Collet Range (d)
<b>VCK6</b>	1.567" (39.8mm)	1/8" - 1/4" (2mm - 6mm)
<b>VCK13</b>	2.126" (54mm)	1/8" - 1/2" (3mm - 12mm)



### VCK6 COLLETS

Size range: 1/8" - 1/4"

Size range: 2.0 - 6.0mm  
(0.079 - 0.236")

#### INCH

Part Number	Size	Collet Series
<b>VCK6-1/8</b>	1/8"	VCK6
<b>VCK6-3/16</b>	3/16"	VCK6
<b>VCK6-1/4</b>	1/4"	VCK6

#### METRIC

Part Number	Size	Collet Series
<b>VCK6-2</b>	2.0mm	VCK6
<b>VCK6-3</b>	3.0mm	VCK6
<b>VCK6-4</b>	4.0mm	VCK6
<b>VCK6-5</b>	5.0mm	VCK6
<b>VCK6-6</b>	6.0mm	VCK6

### VCK13 COLLETS

Size range: 1/8" - 1/2"

Size range: 3 - 12mm  
(0.118 - 0.472")

#### INCH

Part Number	Size	Collet Series
<b>VCK13-1/8</b>	1/8"	VCK13
<b>VCK13-3/16</b>	3/16"	VCK13
<b>VCK13-1/4</b>	1/4"	VCK13
<b>VCK13-5/16</b>	5/16"	VCK13
<b>VCK13-3/8</b>	3/8"	VCK13
<b>VCK13-7/16</b>	7/16"	VCK13
<b>VCK13-1/2</b>	1/2"	VCK13

#### METRIC

Part Number	Size	Collet Series
<b>VCK13-3</b>	3.0mm	VCK13
<b>VCK13-4</b>	4.0mm	VCK13
<b>VCK13-5</b>	5.00mm	VCK13
<b>VCK13-6</b>	6.00mm	VCK13
<b>VCK13-7</b>	7.00mm	VCK13
<b>VCK13-8</b>	8.00mm	VCK13
<b>VCK13-9</b>	9.00mm	VCK13
<b>VCK13-10</b>	10.00mm	VCK13
<b>VCK13-11</b>	11.00mm	VCK13
<b>VCK13-12</b>	12.00mm	VCK13

### TIGHTENING TORQUE FOR VC COLLET CHUCKS

Collet Type	Size	Nut Tightening Torque (ft/lbs)	
		< Ø3mm	Ø3 - Ø6mm
<b>VC</b>	VCK6	7-22	22-37
	VCK13	29-55	



# VC COLLET CHUCKS

## VC COOLANT COLLET SYSTEM



Collet Chuck	Collet	Coolant Nut Part Number	Cutting Tool Size	Coolant-Thru Disk Part Number	Slotted Disk Part Number	Disk Wrench Part Number	Blank Disk (Machinable) Part Number
VC6	VCK6 Range: 2 - 6mm [1/8" - 1/4"]	VCN-6BJ	2mm	SKJ10-2C	SKJ10-2	SKJL-10	SKJ10-BLANK
			3mm	SKJ10-3C	SKJ10-3		
			4mm	SKJ10-4C	SKJ10-4		
			5mm	SKJ10-5C	SKJ10-5		
			6mm	SKJ10-6C	SKJ10-6		
			1/8"	SKJ10-1/8C	SKJ10-1/8		
			3/16"	SKJ10-3/16C	SKJ10-3/16		
			1/4"	SKJ10-1/4C	SKJ10-1/4		
VC13	VCK13 Range: 3 - 12mm [1/8" - 1/2"]	VCN-13BJ	3mm	SKJ16-3C	SKJ16-3	SKJL-16	SKJ16-BLANK
			4mm	SKJ16-4C	SKJ16-4		
			5mm	SKJ16-5C	SKJ16-5		
			6mm	SKJ16-6C	SKJ16-6		
			7mm	SKJ16-7C	SKJ16-7		
			8mm	SKJ16-8C	SKJ16-8		
			10mm	SKJ16-10C	SKJ16-10		
			12mm	SKJ16-12C	SKJ16-12		
			1/8"	SKJ16-1/8C	SKJ16-1/8		
			3/16"	SKJ16-3/16C	SKJ16-3/16		
			1/4"	SKJ16-1/4C	SKJ16-1/4		
			5/16"	SKJ16-5/16C	SKJ16-5/16		
			3/8"	SKJ16-3/8C	SKJ16-3/8		
			7/16"	SKJ16-7/16C	SKJ16-7/16		
			1/2"	SKJ16-1/2C	SKJ16-1/2		



## VC COLLET CHUCK ACCESSORIES

### VC BACK-UP SCREW

Part Number	Description
<b>VC66-8A</b>	Use with VC6 chucks
<b>VC613-15A</b>	Use with VC13 chucks



### VC NUTS

Part Number	Description
<b>VCN-6B</b>	Standard Nut for VC6 chucks
<b>VCN-6BJ</b>	J Coolant Nut for VC6 chucks
<b>VCN-13B</b>	Standard Nut for VC13 chucks
<b>VCN-13BJ</b>	J Coolant Nut for VC13 chucks



### VC NUT WRENCHES

Part Number	Description
<b>GH10</b>	VC6 Chuck Wrench
<b>GH16</b>	VC13 Chuck Wrench



### TORQUE WRENCH AND ATTACHMENT FOR VC COLLET CHUCK

Part Number	Description
<b>TQW-025</b>	Torque Wrench for VC6 Collet Chuck Nut
<b>TQW-200</b>	Torque Wrench for VC13 Collet Chuck Nut
<b>TQW-GH10(14X18)</b>	VC6 Attachment for TQW-025 Chuck Wrench
<b>TQW-GH16</b>	VC13 Attachment for TQW-200 Chuck Wrench



### COOLANT TUBE WRENCH

Part Number	Description
<b>HSK32-WRENCH</b>	Wrench for HSK32 Coolant Tube
<b>HSK40-WRENCH</b>	Wrench for HSK40 Coolant Tube
<b>HSK50-WRENCH</b>	Wrench for HSK50 Coolant Tube
<b>HSK63-WRENCH</b>	Wrench for HSK63 Coolant Tube
<b>HSK100-WRENCH</b>	Wrench for HSK100 Coolant Tube



### COOLANT TUBE

Part Number	Description
<b>HSK40-TUBE</b>	Coolant Tube for HSK40 holders
<b>HSK63-TUBE</b>	Coolant Tube for HSK63 holders
<b>HSK100-TUBE</b>	Coolant Tube for HSK100 holders

